

ANNUAL REPORT

FY 2018-2019

The Gut Cancer Foundation (GCF), formerly known as Gastro-Intestinal Cancer Institute of New Zealand (GICI), is dedicated to improving the outcomes for patients with gastro-intestinal cancer. GCF aims to increase awareness of Gastro-intestinal (GI) cancers and raise funds to support clinical research in New Zealand, focusing particularly on clinical trials.

TO OUR SUPPORTERS AND COMMUNITY

OUR TEAM

Gut Cancer Foundation was founded in 2008 by Professor of Oncology Michael Findlay, bowel cancer survivor Grant Baker, and pancreatic cancer survivor Paul Hargreaves. They were inspired by Australia's GI Cancer Institute (AGITG), to establish an entity to fill the serious funding gap for awareness of GI cancers and clinical research into gastro-intestinal cancers.

Patron

- Dame Rosie Horton, Auckland

Ambassadors

- Anne Hargreaves, Auckland
- Lisa Toi, Leigh
- Nyree Smith, Pancreatic Cancer Survivor, Auckland

GCF Board of Directors

- Grant Baker, Chairman, Bowel Cancer Survivor, Auckland until October 2018
- Tim Miles, Chairman, Auckland from November 2018
- Professor Michael Findlay, Gastro-intestinal Oncologist, Auckland
- Anna St George, Marketing and Communications, Auckland
- Professor Tim Price, Gastro-intestinal Oncologist, AGITG Chairman, Australia
- Christine Liddy, AGITG representative, Australia
- Lisa Toi, Family Ambassador for GCF, Leigh

GCF Scientific Advisory Committee

- Professor Bridget Robinson, Chair, Medical Oncologist, Christchurch
- Professor Michael Findlay, Gastro-intestinal Oncologist, Auckland
- Professor John McCall, Gastro-intestinal Surgeon, Dunedin
- Dr Iain Ward, Radiation Oncologist, Christchurch
- Kerin Thompson, Research Management, Motueka
- Associate Professor Clare Wall, Director of Dietetics and Nutrition, Auckland

GCF's Executive Officer:

Ruth Davy, Bachelor of Nursing, Master of Public Health, Auckland.

Tim Miles, GCF's Chairman



TO OUR SUPPORTERS AND COMMUNITY

CHAIRMAN'S REPORT

In November 2018 our long-serving Chairman, Grant Baker, stood down after 10 years of wonderful service to the Gut Cancer Foundation (GCF). Grant and the team together built GCF so that today it has a real impact and makes a difference to the awareness and treatment of gastro-intestinal (GI) cancer services in New Zealand. An excellent platform has been created and I and the team plan to build on this work to enable improved survival rates and awareness of GI cancers.

Research support funding is critical to treatment options and we are extremely grateful to those individuals and organisations that so generously support our work. Some highlights of the past year include:

- new research support funding awarded to the University of Auckland for the THYmine2 research study.
- Professor Peter Shepherd and his team at the University of Auckland have been awarded for a second year to study a form of difficult to treat colorectal cancer.
- The award of a clinical fellowship to Dr Janet Rhodes, of the University of Otago, who is working on the immunoscore test for colorectal cancer as part of her PhD.
- The continued funding of clinical trials with INTEGRATE 2 and TOPGEAR in progress.

The 'LoveYerGuts Awareness Campaign' occurred in April and May of 2018 raising over \$35,000 from wonderful community and corporate fundraising efforts. Significant media coverage including TV Three Newshub, TV Three AM Show and TV Three's The Café interviews, national print media and awareness raised through social media. Profiling Stan Walker's journey with stomach cancer also supported the campaign.

Our major fundraising event GastroFest occurred in October at St Mathew in the City raising more than \$70,000. Thanks to our corporate sponsors including Qatar Airlines NZ, Turners Automotive, Rothbury Insurance and Cumulo 9. Geoff Scott led the culinary team which included Des Harris and Little Wolf Catering.

Big Boys Toys once again raised just over \$17,000 in November whilst fundraising from events and activities in the community has grown thanks to increased awareness of GI cancers and GCF.

Grant funding increased this year with Lotteries National supporting improved awareness resources and JM Thompson supporting the 2019 LoveYerGuts Awareness Campaign.

We continue to be grateful for the ongoing support from all our stakeholders and the community as we unite together to make a positive difference for New Zealanders.

With thanks, Tim Miles - Chair GCF

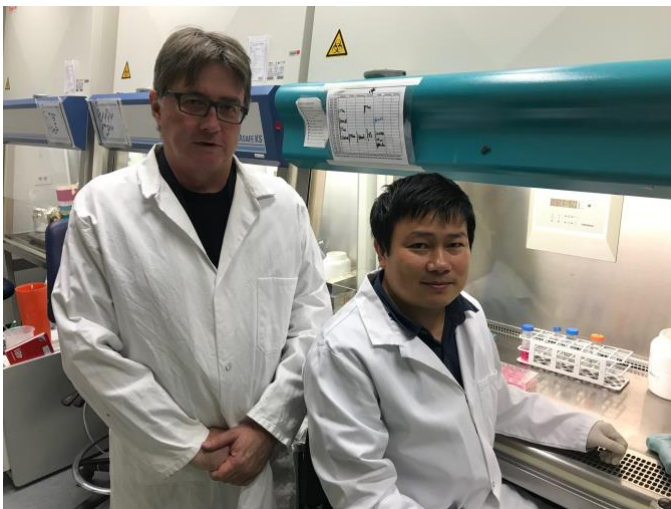
TO OUR SUPPORTERS AND COMMUNITY

STRATEGIC HIGHLIGHTS

We are pleased to highlight the following progress:

- Increased awareness of GI cancers, the facts, risks and treatments
- Increased public recognition of our brand and purpose
- Improved access to detailed resources
- Increased funding for clinical research
- Two research projects completed, two research projects in progress and one clinical fellowship in progress
- Two current clinical research trials
- Increased media presence with the 'LoveYerGuts' strategy
- Biannual GastroFest event successfully implemented
- Increased donations

INCREASED FUNDING FOR CLINICAL RESEARCH



GCF awarded a second grant of \$50,000 in March of 2018 to **Professor Peter Shepherd and Dr Khanh Tran, Auckland Cancer Society Research Centre and the Department of Molecular Medicine at the University of Auckland.**

A drug combination used to treat melanoma will be trialed in the laboratory as a pre-clinical experiment to determine if there is any colorectal tumour response using the drugs Vemurafenib and Axitinib.

This grant was made possible by the Ted and Mollie Carr Endowment Trust and the Estate of Ernest Hyam Davis, through Perpetual Guardian.

TO OUR SUPPORTERS AND COMMUNITY



Dr Roslyn Kemp of the University of Otago completed her research funding this year.

“The research goal of our laboratory is to identify the immune response within the tumours of people with colorectal cancer. This information could then be used to determine which patients may respond to therapies such as immune checkpoint blockade, or to identify new immunological targets for treatment. We are currently validating a new tool to quantify immune cells for the first time in New Zealand patients. This small pilot study has discovered a new type of immune cell that was associated with a good outcome for patients. We are currently optimising imaging techniques to enable us to

discover whether this new immune cell is predictive of survival in a larger cohort and to determine how it functions”. Outcomes from this research are still in progress.



Dr Rachel Purcell of the University of Otago completed her funding for a study, which shows distinct microbiome patterns associated with different molecular subtypes of colorectal cancer (CRC). Outcomes showed CMS1 is associated with right-sided tumours in females, node negative and poorly differentiated tumours. CMS2 tumours were predominantly left-sided and in male patients. CMS4 were more often found in younger patients, those with rectal tumours and higher stage. Interestingly, we did not find any prognostic benefit of stratifying tumours using CMS, in contrast to the published literature on CMS. In our treatment-naïve cohort, TNM remains the most useful method of tumour stratification. A manuscript has been prepared detailing these

findings and submitted for publication.

TO OUR SUPPORTERS AND COMMUNITY



The Hugh Green foundation 2017 Clinical Fellowship, valued at \$50,000, has been awarded for a second year to Dr Janet Rhodes, a surgical registrar trainee, to take time out of her clinical work to complete her PhD.

Her supervisors are Professor John McCall and Dr Roslyn Kemp who are well known to GCF. “Colorectal cancer (CRC) is the second highest cause of cancer death in New Zealand. Some patients require surgery alone, while others need chemotherapy to complete treatment. It is not always clear which patients will require chemotherapy to optimise their chance of survival. The immunoscore is a recently developed tool that measures the patient’s immune response to cancer and helps to determine which patients may need additional therapies. My PhD will validate the use of the immunoscore in New Zealand CRC. I will identify other aspects of the immunoscore to improve its ability to predict outcomes for the patient”. Dr Rhodes is currently on maternity leave and resumes her work August 2019.



GCF has funded Dr Nuala Helsby and her team at the University of Auckland, a year’s part time salary for a clinical trial manager to support the following research.

THYmine2 is an observational study to assess whether the thymine loading test can prospectively categorise patients who cannot tolerate 5-FU treatment (e.g. FOLFOX, CapeOx, FLOX). This treatment is commonly used in GI and breast cancer treatment. Reactions occur in approximately 10% of patients and can result in life threatening events. Despite extensive research it is still difficult to determine who is at risk of life-threatening toxicity related to 5-FU. This study aims to examine whether the ratio of thymine to its metabolite in urine can discriminate between patients who tolerate 5-FU and those who experience severe 5-FU related toxicity. If successful, then it could be a simple and inexpensive way to identify susceptible patients before they start treatment and allow for dose adjustments or alternative treatment. This is partly funded by the David Levene Foundation.

TO OUR SUPPORTERS AND COMMUNITY

SCIENTIFIC ADVISORY COMMITTEE

The Scientific Advisory Committee (SAC) offers advice to the GCF Board about clinical research into gut cancers, and also provides guidance on all clinical matters. The SAC assesses applications from New Zealand researchers for funding for clinical trials, and also searches for studies relevant to New Zealand which GCF could support, in an effort to make more trials available. This increases opportunities for New Zealanders with Gut cancers to gain access to new treatments faster.

The SAC members offer a breadth of experience and expertise. It includes Professor Michael Findlay (Director Cancer Trials New Zealand), Professor Clare Wall (dietetics and nutrition), Kerin Thompson (clinical trials management), Dr Iain Ward (radiation oncologist), Professor John McCall (surgeon) and Professor Bridget Robinson (medical oncologist).

The Clinical Research projects currently that have been approved by SAC are described above. In addition, this year GCF has either funded, or approved for funding, the following clinical trials:

ACTICCA_1

GCF has agreed to fund **Dr Amanda Ashley and her team at Auckland Hospital**, for three patients to go onto this valuable trial.

ACTICCA-1 is a randomised, controlled, two stage, multicentre Phase III trial comparing gemcitabine+ cisplatin with standard of care (capecitabine) after curative intent resection of cholangiocarcinoma and muscle invasive gallbladder carcinoma. In this trial patients will receive either cisplatin and gemcitabine or capecitabine alone following their surgery. The aim is to find out if giving cisplatin and gemcitabine can improve the outcomes for these patients.

TOPGEAR

GCF is committed to funding a further two patients on to the TOPGEAR trial, a randomised study in gastric cancer investigating whether the addition of radiation treatment to chemotherapy before a patient's surgery can improve outcomes such as pathological complete response rates and overall survival.



Bridget Robinson

Scientific Advisory Committee Chair

TO OUR SUPPORTERS AND COMMUNITY

LOVEYERGUTS CAMPAIGN

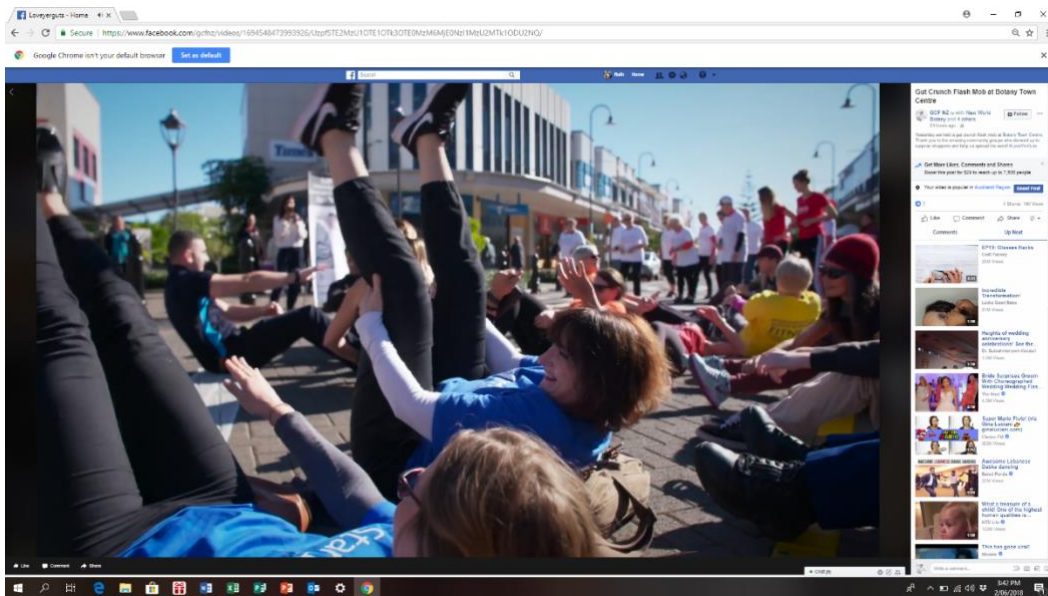
Based on the 2017 'LoveYerGuts' Awareness Campaign, the key purpose of this campaign was to raise the brand awareness through engagement of Alexander PR. Stan Walker's disclosure of his stomach cancer journey due to the family gene gave us the opportunity to engage with TV 3 with Newshub, the AM Show and The Café.



Michelle Dickinson, Nano girl, was interviewed for NZ Women's Weekly. Laura Robson's video for LoveYerGuts from 2017 was used in the Café Show as Laura sadly passed away from bowel cancer in February this year. Elaine Lunken's journey with pancreatic cancer was profiled earlier in the year with NZ Women's Weekly. Waitomo News profiled the Waitete RFC event.

With the support of Emergent Ltd and Alexander PR two 'Flash Mobs' occurred in Auckland City and Botany Town Centre on May 31st. A video has been created for use in the future thanks to the generous support of Alexander PR.

There was significant social media coverage through facebook, instagram and PopShop through Stuff.co.nz. Once again Claire Turnbull supported the campaign.



TO OUR SUPPORTERS AND COMMUNITY

RESOURCES

Detailed GI Cancer information Booklet



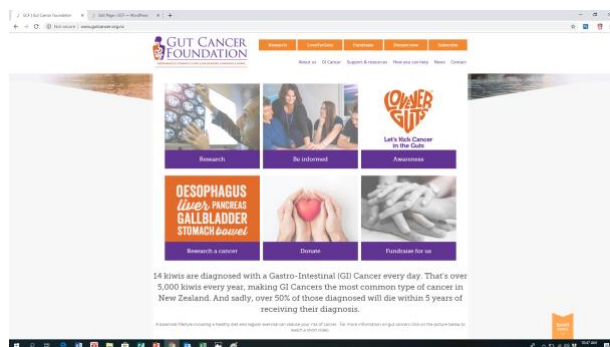
A review of this booklet occurred thanks to funding from Lotteries National. This 32-page detailed booklet includes facts about all the gut cancers, where to access more information and helpful tips for people living with a gut cancer. Email: info@gutcancer.org.nz for hard copies. It is also available for download on www.gutcancer.org.nz/support-resources

New Videos and upgraded Website



A new series of videos profiling Glynn Mead's story about his father's journey with pancreatic cancer and Anika Henderson, a 32-year-old survivor of bowel cancer stage 2. Signs and symptoms of GI cancers are explained.

Thanks to Lotteries National for funding of the video production.



Our website was upgraded to include tiles to enable better navigation by consumers.

TO OUR SUPPORTERS AND COMMUNITY

GASTROFEST



A night to remember thanks to St Mathew in the City and Will Martin, NZ entertainer. The venue was packed, and the food stunning thanks the Geoff Scott, Des Harris and Little Wolf Catering. Only Events once again ensured a magnificent event occurred to the highest of quality. Qatar Airlines NZ joined us this year and ensured the winner of the Ferrari experience in Italy would enjoy a truly memorable trip. Thanks to our cash sponsors Turners Automotive, Rothbury Insurance and Cumulo 9 who continue to support us. Donors of prizes and the raffle, attendees, volunteers and all who helped made this a night to remember raising over \$70,000. THANK YOU all.

TO OUR SUPPORTERS AND COMMUNITY

BIG BOYS TOYS

Once again, we were privileged to be the charity of choice for Big Boys Toys. Volunteer Auckland provided many of the bucket collectors and with the support of Big Boys Toys management we raised over \$17,000. Thanks, must go to Grant Baker, our founding chairman, who allowed Big Boys Toys to display his LaFerrari Aperta.

GRANTS AND DONATIONS

We are extremely grateful to all the funders who have supported our work this year:

Grants for Awareness Raising

- JM Thomson \$20,000 for the Awareness Campaign in 2019
- Lotteries National \$10,000 for development of awareness resources

Donations / Grants for Research

- The Hugh Green Foundation \$50,000 for the Clinical Research Fellowship
- Ted and Mollie Carr Endowment Trust and the Estate of Ernest Hyam Davis \$50,000 for Clinical Research in the Auckland region
- David Levene Foundation \$10,000 for THYmine2 research

TO OUR SUPPORTERS AND COMMUNITY

FINANCIAL HIGHLIGHTS

Fundraising income through events and donations remains very positive and thanks to GastroFest as well as generous donors, we have a significant increase in income this year. Overall, we are in a financially stable situation with funds invested.

OPERATING HIGHLIGHTS

Funding of clinical research trials and clinical research has once again increased significantly this year thanks to the grants and donations. We are looking at new opportunities for raising funds through LoveYerGuts, corporate engagement, grants and legacies. Overheads remain low thanks to support services listed below.

2018 TO 2019 KEY SPONSORS



Special thanks for ongoing support from:

Alexander PR; Big Boys Toys; Business Bakery; PwC New Zealand; Rothbury Insurance; Chapman Tripp Lawyers; Continental Cars; Emergent Recruiters; BNZ Hamilton branch; Only Events; Cumulo9.

TO OUR SUPPORTERS AND COMMUNITY

LOOKING AHEAD

The year ahead will see a change of the guard for GCF as I have made the difficult decision to resign as EO. I have thoroughly enjoyed working with you all. A special thank you to the dedicated GCF Board; Grant Baker who has been an extraordinary chairman; the Scientific Advisory Committee for their expertise; our Ambassadors in particular Anne Hargreaves who continued to support me throughout my term; our new Pancreatic Cancer Ambassador Nyree Smith; Dame Rosie Horton as our Patron; all our volunteers, donors and funders.

LoveYerGuts began at the end of 2019 at a different level thanks to the participation of Turners Automotive team. Todd Hunter and your team have been very supportive of Gut Cancer Foundation and we are forever grateful.

I wish you all well and hope to see you at future events. Keep up the work so we can truly Kick Cancer in the Guts!



Ruth Davy

Executive Officer



**Let's Kick Cancer
in the Guts**

TO OUR SUPPORTERS AND COMMUNITY

Gut Cancer Foundation
Statement of Financial Performance
 "How was it funded?" and "What did it cost?"
 For the year ended
 31st March 2019

	Actual* This Year \$	Actual* Last Year \$
Revenue		
Fundraising and event income	143,058	86,453
Grant income and donations	290,426	127,307
Interest, dividends and other investment revenue*	276	338
Other revenue	-	-
Total Revenue*	433,760	214,098
Expenses		
Expenses related to public fundraising*	80,618	39,914
Volunteer and employee related costs*	81,755	78,003
Costs relating to providing goods or services	18,947	8,493
Awareness	37,558	41,243
Grants and donations made*	132,269	85,797
Other expenses	1,414	614
Total Expenses*	352,561	254,064
Surplus / (Deficit) for the Year*	81,199	(39,966)

TO OUR SUPPORTERS AND COMMUNITY

Gut Cancer Foundation
Statement of Financial Position
 "What the entity owns?" and "What the entity owes?"
 As at
 31 March 2019

	Actual* This Year \$	Actual* Last Year \$
Assets		
Current Assets		
Bank accounts and cash*	323,998	285,816
Debtors and prepayments*	6,425	9,683
Total Current Assets	330,423	295,499
Non-Current Assets		
Property, plant and equipment*	1,284	40
Intangible assets	287	575
Investments	100,000	50,000
Total Non-Current Assets	101,571	50,615
Total Assets*	431,994	346,114
Liabilities		
Current Liabilities		
Creditors and accrued expenses*	46,745	40,886
Employee costs payable	6,301	7,671
Total Current Liabilities	53,046	48,557
Total Liabilities*	53,046	48,557
Total Assets less Total Liabilities (Net Assets)*	378,948	297,557
Accumulated Funds		
Capital contributed by owners or members*	192	
Accumulated surpluses*	304,364	230,479
Reserves*	74,392	67,078
Total Accumulated Funds*	378,948	297,557

TO OUR SUPPORTERS AND COMMUNITY

CONTACT INFORMATION

PHONE

0800 112 775

ORGANISATION INFORMATION

CC Number: 39174

PO Box 28723, Remuera, Auckland 1541, New Zealand

Tel 0800 112 775

www.gutcancer.org.nz



Let's Kick Cancer
in the Guts